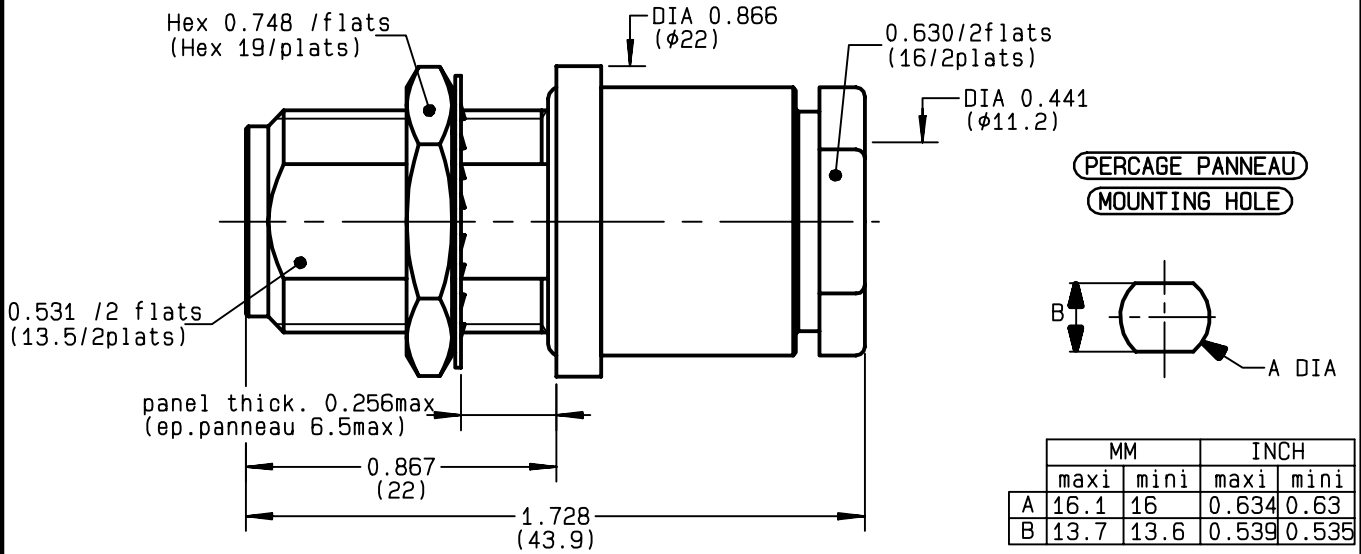


**STRAIGHT BULKHEAD JACK PANEL SEAL
CLAMP TYPE - CABLE 10+11/50**

R161.340.050
SERIES N



NOMINAL IMPEDANCE	50	Ω
FREQUENCY RANGE	0-11	GHz
TEMPERATURE RATING	-55/+155	°C
V.S.W.R	1.30 +	x F(GHz)Maxi
RF INSERTION LOSS	0.048	√F(GHz) dB Maxi
VOLTAGE RATING	1400	Veff Maxi
DIELECTRIC WITHSTANDING VOLTAGE	2500	Veff Mini
INSULATION RESISTANCE	5000	MΩMini
HERMETIC SEAL	NA	Atm.cm ³ /s
LEAKAGE (pressurized only)	NA	
MECHANICAL DURABILITY	500	Cycles
WEIGHT	53	gr
SPECIFICATION		

- CABLES : **KX 4**
KX 8
RG 11
RG 144
RG 165
RG 213
RG 214
RG 216
RG 225
RG 393

OTHERS CHARACTERISTICS

CABLE RETENTION	300	N Mini
CENTER CONTACT RETENTION		
Axial force - mating end	68	N Mini
Axial force - opposite end	68	N Mini
Torque	NA	cm.N Mini
RECOMMENDED TORQUES		
Mating	NA	cm.N
Panel nut	500	cm.N
Clamp nut	800	cm.N

CONNECTOR PARTS : MATERIALS

BODY	BRASS
OUTER CONTACT	
CENTER CONTACT	BERYLLIUM COPPER
INSULATOR	PTFE
GASKET	SILICONE RUBBER
OTHERS PIECES	BRASS

FINISH

(all values are given in micrometers)

BLACK-CHROMIUM 0.2 OVER NICKEL 2
GOLD 0.5 OVER NICKEL 2
-
-
BLACK-CHROMIUM 0.2 OVER NICKEL 2

BONOMINI

ISSUE 9815C00	CREATION DATE 14/12/1993	FILE PART-NUMBER EPC 96-07
-------------------------	------------------------------------	--------------------------------------



RADIALL®

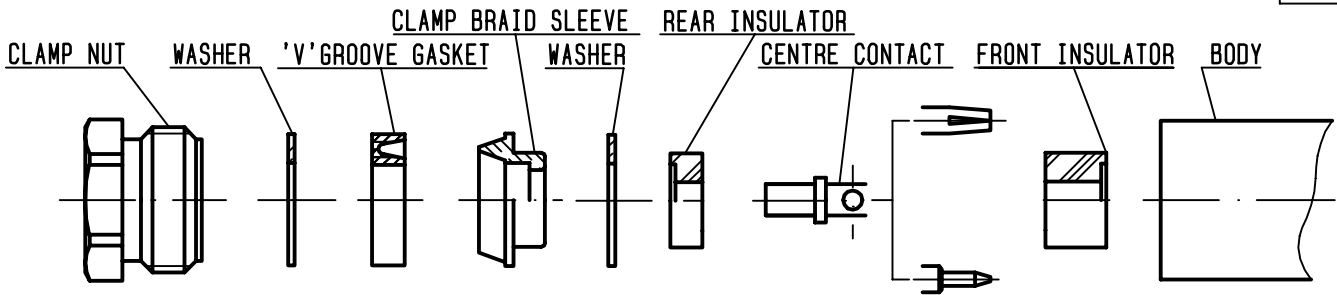
The information given here is subject to change without notice.
Design changes may be in order to improve the product.

Connect to the future



R161.340.050

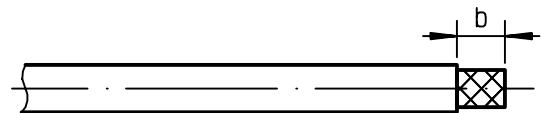
ISSUE **9815C00** SERIES **N**



①

Strip the cable .

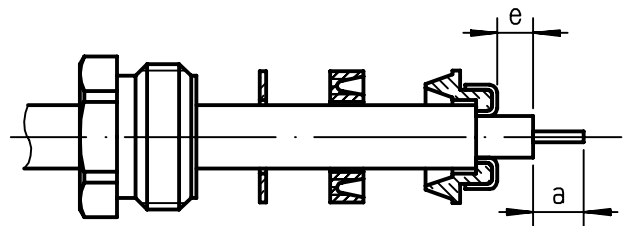
-
-
-
-



Stripping	a	b	c	d	e
inch	0.197	0.335	0	0	0.059
mm	5	8.5			1.5

②

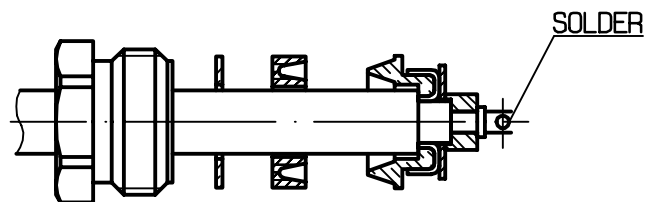
Slide the clamp nut , the washer and the 'V'groove gasket onto the cable .
Slide clamp braid sleeve over braid .
Fold back braid and trim off surplus braid .
Trim back dielectric as shown .



③

Mount washer and rear insulator .
Solder the cable inner conductor into centre contact .

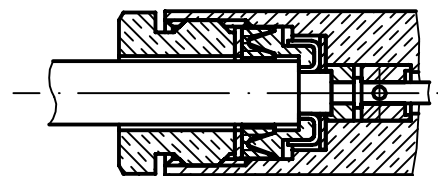
-
-
-



④

Mount front insulator .
Screw sub-assembly into the connector body .
(recommended coupling torque 70.87 in.lb)

-



Hex. : 0.63/flats